

*EUPALOPSIS AEGYPTIACA* n. sp. (ACARINA. STIGMAEIDAE)

BY

M. A. ZAHER & Z. R. SOLIMAN.

(*Plant Protection Dept., Faculty of Agriculture, Cairo University*).

DIAGNOSIS. — This species is characterized by the punctuation of the idiosoma and the relatively small size of anterior eyes over posterior ones.

FEMALE (Fig. 1). — Body oval, dorsally punctated and longer than legs, cheliceral bases fused with anterior inner margin; propodosomal shield covers entire propodosoma and completely separated from hysterosomal one, anterior eyes relatively smaller than posterior, hysterosomal shield divided behind each of second and third dorsocentral hysterosomal setae.

Setae strongly serrate reaching or surpassing bases of next row setae. Legs sensory rods of moderate length; genital and anal openings contiguous and postero-ventral.

Body length 414 M, width 191 M.

Holotype female in collection of Faculty of Agriculture, Cairo Univ.

Host plant: Pear trees.

Type locality: Samanode, mid-delta, U. A. R.

MALE (Fig. 2). — Body smaller than female, longer than legs, oval, pointed posteriorly and dorsally punctated; cheliceral bases fused with anterior inner margin; posterior eyes larger than anterior ones; propodosomal shield separated from hysterosomal which divided dorsally behind each of second and fourth dorsocentral hysterosomal setae.

Setae serrate; legs sensory rods stronger than those of female; sensory rods of legs III and IV apparently stronger than those of legs I and II. Adeoagus clear.

Body length 366 M, width 143 M.

Allotype male in collection of Faculty of Agriculture, Cairo University.

ACKNOWLEDGEMENT.

The authors thank Dr. E. W. BAKER of the U. S. D. A. and Dr. F. M. SUMMERS of Entomology Dept., University of California for the confirmation of this species.

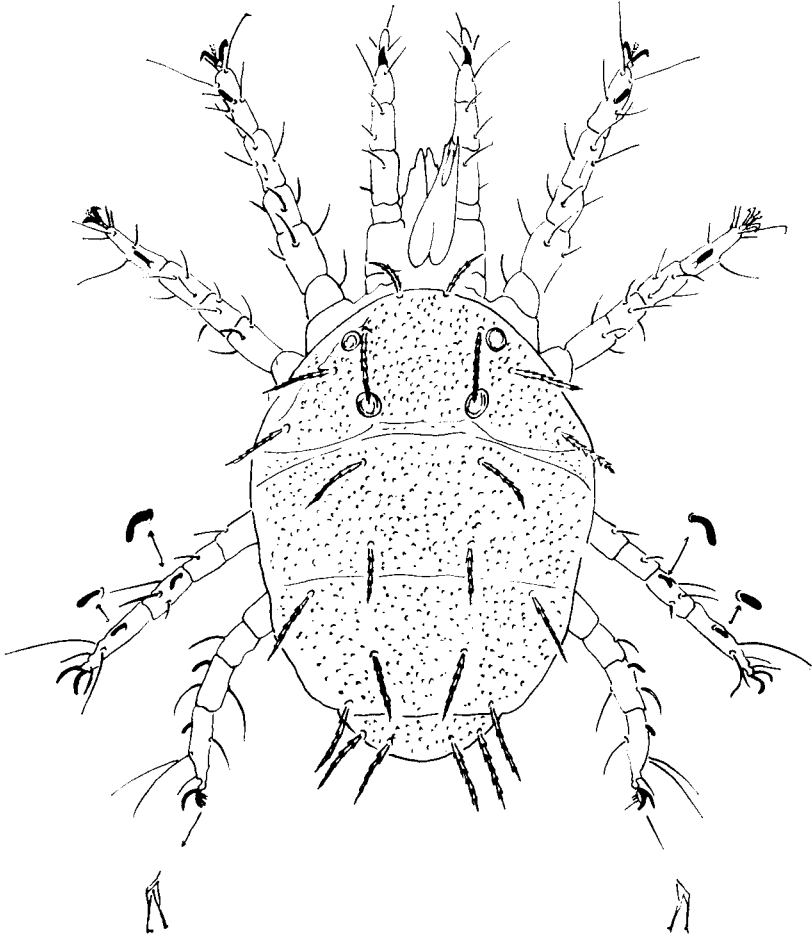


FIG. 1. — Female (dorsal view).

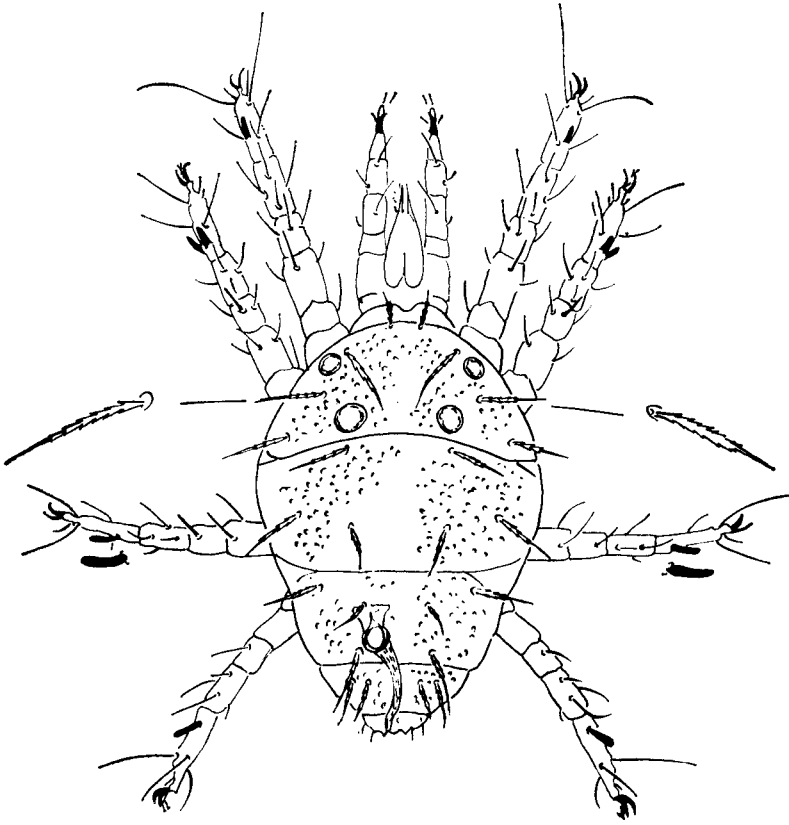


FIG. 2. — Male (dorsal view).

\_\_\_\_\_